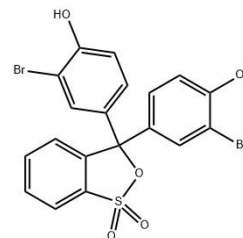


## Technical Data Sheet Bromophenol Red

### Compound Information

<b>Product Name:</b>	Bromophenol Red
<b>CAS No.:</b>	2800-80-8
<b>Molecular Formula:</b>	C <sub>19</sub> H <sub>12</sub> Br <sub>2</sub> O <sub>5</sub> S
<b>Molecular Weight:</b>	512.17
<b>Storage:</b>	Store at RT
<b>Revision Date:</b>	2026-04-15



### Analytical Information

Tests	Specifications
Appearance	Red powder
Solubility	Solubility Sparingly soluble in water; soluble in ethanol
UV	Absorptivity 1%, 1cm(pH 4.7) at $\lambda_{max}$ 439.0 nm: (340-370)(pH 6.3) at $\lambda_{max}$ 579.5 nm: (585-720)
Visual Transition Range	From pH 4.7 (Yellow) to pH 6.3 (Purple)
LOD	$\leq 5.0\%$ (110°C, 1 hour)
Dye content	$\geq 95\%$
<a href="#">IR</a>	Pass test

Disclaimer: This information relates only to the specific material designated and may not be valid for such material used in combination with any other materials or in any other process. Such information is to be the best of the company's knowledge and believed accurate and reliable as of the date indicated. However, no representation, warranty or guarantee of any kind, express or implied, is made as to its accuracy, reliability or completeness and we assume no responsibility for any loss, damage or expense, direct or consequential, arising out of use. It is the user's responsibility to satisfy himself as to the suitability & completeness of such information for his own particular use.