

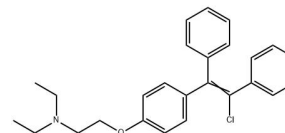
## Technical Data Sheet

### Clomifene

---

#### Compound Information

Product Name:	Clomifene
CAS No.:	911-45-5
Molecular Formula:	C <sub>26</sub> H <sub>28</sub> ClNO
Molecular Weight:	405.96
Revision Date:	2026-04-15



#### Analytical Information

Tests	Specifications
Description	Clomifene is an orally active compound used for infertility. Clomifene is a simple, relatively safe, easily administered and well-tolerated efficacious compound to induce ovulation.

---

Disclaimer: This information relates only to the specific material designated and may not be valid for such material used in combination with any other materials or in any other process. Such information is to be the best of the company's knowledge and believed accurate and reliable as of the date indicated. However, no representation, warranty or guarantee of any kind, express or implied, is made as to its accuracy, reliability or completeness and we assume no responsibility for any loss, damage or expense, direct or consequential, arising out of use. It is the user's responsibility to satisfy himself as to the suitability & completeness of such information for his own particular use.

---