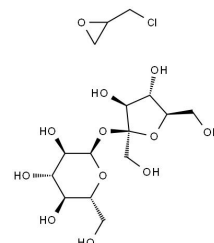


Technical Data Sheet

Polysucrose

Compound Information

Product Name:	Polysucrose
CAS No.:	26873-85-8
Molecular Formula:	$(C_{12}H_{22}O_{11}.C_3H_5ClO)_x$
Molecular Weight:	434.82
Storage:	Store at RT
Revision Date:	2026-04-27



Analytical Information

Tests	Specifications
Description	Polysucrose 400 is a highly branched polymer formed by the copolymerization of sucrose and epichlorohydrin. Polysucrose 400 is completely non-ionic. Because of the abundance of hydroxyl groups, Polysucrose 400 is very hydrophilic and extremely water-soluble
Form	lyophilized powder
Color	White
Solubility	H ₂ O: 0.1 g/mL, slightly turbid, colorless
Specific Rotation	$\alpha_{20D} = 50 - 65^\circ$

Disclaimer: This information relates only to the specific material designated and may not be valid for such material used in combination with any other materials or in any other process. Such information is to be the best of the company's knowledge and believed accurate and reliable as of the date indicated. However, no representation, warranty or guarantee of any kind, express or implied, is made as to its accuracy, reliability or completeness and we assume no responsibility for any loss, damage or expense, direct or consequential, arising out of use. It is the user's responsibility to satisfy himself as to the suitability & completeness of such information for his own particular use.